



US30 CH N° 30302  
**PROTEM**  
26800 ETOILE/RHONE - FRANCE  
Tél. +33(0)4 75 57 41 41 - www.protem.fr  
CE 2013 ISO 9001:2008

Tube and pipe beveling Protem  
mm .6 Boiler machine

# US30-CH

**PROTEM SAS**

Phone: +33 (0) 4 75 57 41 41

Fax: +33 (0) 4 75 57 41 49

contact@protem.fr

www.protem.fr

**PROTEM GmbH**

Phone: +49 (0) 7247 9393 - 0

Fax: +49 (0) 7247 9393 - 33

info@protem-gmbh.de

www.protem-gmbh.de





# US30-CH

ID clamping bevelling machine tubes, pipes and boiler tubes

The US30-CH portable pipe bevelling tool is the most powerful, robust, reliable and versatile bevelling/facing machine in the world.

The US30-CH covers diameters ranging from 1.26" to 4.6" ID - 32 to 117 mm.

The standard tool plate will accept multiple tool bits, allowing up to 4 simultaneous machining operations. The tool bits can be changed and adjusted very quickly. Carbide tool inserts can alternatively be used.

The US30-CH features a self-accepting torque system and an integral drive motor

Such operations may include bevelling, 30° and 37°30, 45° bevels, J-bevels, facing, counterboring, compound bevelling, OD chamfering, removal of weld joints on tube sheets, lengthening of tubes on tube sheets.

## WE DELIVER UNMATCHED SOLUTIONS!

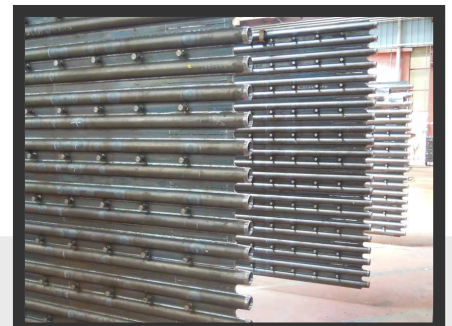
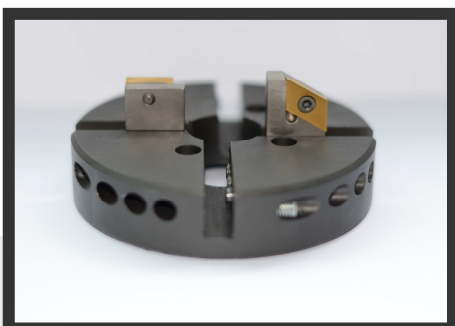
To machine perfect weld preparations

The PROTEM US30-CH will perform repeatable high quality weld preparations on all types of materials including mild, chrome, stainless steel, duplex, super duplex, copper-nickel alloy steel, inconel, P91, aluminium, copper and exotic alloys

### OPTIONS:

- Flange facing/single point machining available on request.
- Clamping mandrel for elbows, fittings, tees, flanges.
- Specific milling head for use on membrane walls and boiler panels (US30-CH TA).
- Quick clamping device for serial machining works
- Automatic feed and automatic clamping - US30 CA
- Tool holder plate for diameters up to 6"
- For almost all environments: Irradiated areas, extreme conditions, subsea...

Developed in collaboration with the users, tested and approved by 100 % of them



# US30-CH

**Machining capacity:**

32 mm ID - 117 mm OD  
1.26" ID - 4.6" OD

**Clamping capacity:**

32 mm ID - 117 mm ID \*  
1.26" ID - 4.6" OD

*\*Possible up to 168mm with specific tool holder plate and additional clamping blades*

**Bevel forms:**

Facing, 30° and 37°30', 45° bevel, J-bevel, compound bevels, removal of weld joints, lengthening of tubes others on request

**Clamping:** Manual with key

**Expansion:** 9 mm - 0.35"

**Feed stroke:** 35 mm - 1.37"

**Cutting head gear drive:** 0 - 30 rpm

**Machine is delivered with:**

- Tool holder plate
- Sets of clamping blades for the above mentioned diameters
- 1 facing tool bit
- 1 30° bevelling tool bit
- Keys and screws
- Operating Manual

*No heat affected zone!*

The PROTEM US30-CH is the equipment you will need for your chamfering works!



- ✓ Perfect weld preparation
- ✓ Membrane walls and boiler panels
- ✓ For construction, inspection and repair works on site or in the assembly workshop

**Ready to use!**

## Technical data & equipment – US30–CH

Order no	Article	Weight
<b>US30–CH</b>	- US30–CH with pneumatic drive 730 W and tool holder Ø 130mm (5.1")	~ 9 kg
<b>US30–CH/E</b>	- US30–CH with electric drive 1050 W and tool holder Ø 130 mm (5.1")	~ 9 kg
<b>US30–CH/CA</b>	- US30–CH CA with pneumatic drive and automatic clamping	~ 10 kg
<b>US30–CH/HY</b>	- US30–CH HY with hydraulic drive	~ 10 kg

\* Please note that the US30–CH with electric drive is limited for the machining of tubes with large diameters (>89 mm / 2.7") in connection with heavy wall thicknesses (>10 mm / 0.4"). Please ask us if you want to use this machine for this working capacity.

The pneumatic drive is unlimited usable for the machining of tubes with large diameters and heavy wall thicknesses. We recommend using only pneumatic drive in such cases.

### US30–CH–K01



- crate for US30

### US30–CH–Kit6"

- US30–CH bevelling machine with pneumatic drive for diameters up to 168 mm OD, delivered with 1 tool holder plate Ø180 mm (7")

### US30–CH–K06

- US30–CH–K06 crate for US30 pneumatic drive and Kit6"

### US30–CH/E–RA–Kit6"

- US30–CH bevelling machine with right angle electric drive for diameters up to 168 mm OD , delivered with 1 tool holder plate Ø180 mm (7")

### US30–CH–K07

- US30–CH–K07 crate for US30 right angle electric drive and Kit6"

### US30–CH–K02

- Crate for US30 CA

### US30–CH CA



- Bevelling machine with pneumatic drive and pneumatic clamping system

### US30–CH –ASB

- Flange facing attachment, for the resurfacing or worn or damaged surfaces with diameter 50 mm ID up to 355 mm OD – 2" up to 14"

## FRL200



- Air filter and lubricating unit for pneumatically operated machines with pressure adjustment

## Kit02



- Flexible tubing set for pneumatically operated machines from machine US25

## F-Lub-0,5-L

- Oil for lubricating filters bottle 0,5 liter

## F-Lub-1-L

- Oil for lubricating filters bottle 1 liter

## F-Lub-5-L

- Oil for lubricating filters bottle 5 liter

## HY-HPP 050



- Hydraulic Power Pack ( 5,5 kW)

## OPT-RP



- Pneumatic valve

## OPT-SPH



- Chips Hook

## US30-CH-WPH30°



- Tool insert holder 30°. Other angles on request

### STANDARD TOOLING FOR US SERIES

REF.	Designation	For
O-US-A1-9-H-27	- O-US-A1-9-H-27 tool bit 90°	US30-CH, US40, US80, US150, SE219, S40
O-US-A1-9-H-T-27	- O-US-A1-9-H-T-27 tool bit 90° with titanium coating	US30-CH, US40, US80, US150, SE219, S40
O-US-A1-9-H-F-27	- O-US-A1-9-H-F-27 tool bit 90° with TiCN coating	US30-CH, US40, US80, US150, SE219, S40
O-US-A2-9-H-26	- O-US-A2-9-H-26 tool bit for 30° bevel	US30-CH, US40, US80, US150, SE219, S40
O-US-A2-9-H-T-17	- O-US-A2-9-H-T-17 tool bit for 30° bevel with titanium coating	US30-CH, US40, US80, US150, SE219, S40
O-US-A2-9-H-F-17	- O-US-A2-9-H-F-17 tool bit for 30° bevel with TiCN coating	US30-CH, US40, US80, US150, SE219, S40
O-US-A2-9-H-79	- O-US-A2-9-H-79 tool bit for 30° invers bevel	US30-CH, US40, US80, US150, SE219, S40
O-US-A3-9-H-28	- O-US-A3-9-H-28 tool bits for 37°30 bevels	US30-CH, US40, US80, US150, SE219, S40
O-US-A3-9-H-T-28	- O-US-A3-9-H-T-28 tool bit for 37°30 bevel with titanium coating	US30-CH, US40, US80, US150, SE219, S40
O-US-A3-9-H-F-28	- O-US-A3-9-H-F-28 tool bit for 37°30 bevel with TiCN coating	US30-CH, US40, US80, US150, SE219, S40
O-US-A3-9-H-82	- O-US-A3-9-H-82 tool bit for 37°30 invers bevel	US30-CH, US40, US80, US150, SE219, S40
O-US-A4-9-H-25	- O-US-A4-9-H-25 tool bit for counterboring 15°	US30-CH, US40, US80, US150
O-US-A4-9-H-F-25	- O-US-A4-9-H-F-25 tool bit for counterboring 15° with TiCN coating	US30-CH, US40, US80, US150
O-US-A5-9-H-85	- O-US-A5-9-H-85 tool bit for 45° bevels	US30-CH, US40, US80, US150
O-US-B6-9-H-54	- O-US-B6-9-H-54 tool bit 90°, with disalignment	US30-CH, US40, US80, US150
O-US-B7-9-H-56	- O-US-B7-9-H-56 tool bit 30°, with disalignment	US30-CH, US40, US80, US150
O-US-B8-9-H-59	- O-US-B8-9-H-59 tool bit 37°30, with disalignment	US30-CH, US40, US80, US150
O-US-B9-9-H-61	- O-US-B9-9-H-61 tool bit for counterboring 15°, with disalignment	US30-CH, US40, US80, US150
O-US-B11-9-H-15	- O-US-B11-9-H-15 tool bit for counterboring and squaring	US30-CH, US40, US80, US150
O-US-C5-9-H-63	- O-US-C5-9-H-63 tool bit for 7° R6 j-bevels	US30-CH, US40, US80, US150
O-US-C6-9-H-65	- O-US-C6-9-H-65 tool bit for 12,5° R6 j-bevels	US30-CH, US40, US80, US150
O-US-C7-9-H-67	- O-US-C7-9-H-67 tool bit for 7° R6 j-bevels, with disalignment	US30-CH, US40, US80, US150
O-US-C8-9-H-69	- O-US-C8-9-H-69 tool bit for 12,5° R6 j-bevels, with disalignment	US30-CH, US40, US80, US150
O-US-C9-9-H-29	- O-US-C9-9-H-29 tool bit for 10° R1,5 j-bevels	US30-CH, US40, US80, US150
O-US-C10-9-H-61	- O-US-C10-9-H-61 tool bit for 20° j-bevels	US30-CH, US40, US80, US150



# Contact & Comments

## Our commitment! **Your satisfaction!**

Serving our customers around the world with competence, efficiency and a reliable service is our main target. Whatever your questions, do not hesitate to consult us. Our staff will be always advise you in a professional manner the right equipment that will meet your technical requirements.

**Call** or **email** us for more information!

### **PROTEM GmbH**

Am Hambiegel 27

76706 Dettenheim

Phone: +49 (0) 7247 9393 - 0

Fax: +49 (0) 7247 9393 - 33

[info@protem-gmbh.de](mailto:info@protem-gmbh.de)

[www.protem-gmbh.de](http://www.protem-gmbh.de)

### **PROTEM SAS**

Z.I. Les Bosses

26800 Etoile-sur-Rhone

Phone: +33 (0) 4 75 57 41 41

Fax: +33 (0) 4 75 57 41 49

[contact@protem.fr](mailto:contact@protem.fr)

[www.protem.fr](http://www.protem.fr)

## Your comments:

---

---

---

---